

$$3x - y = 3 \Rightarrow$$

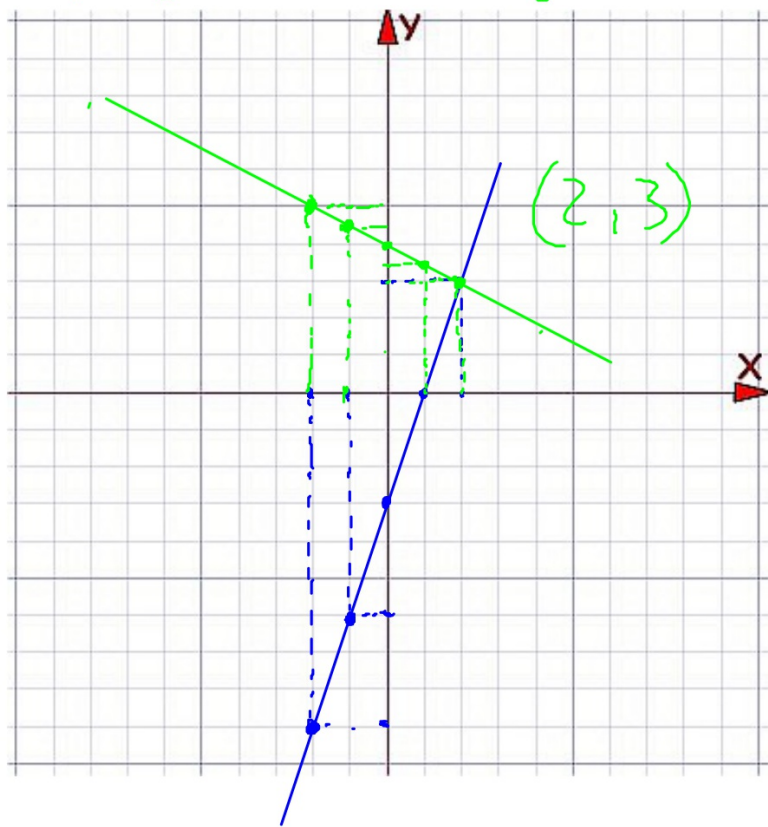
$$x + 2y = 8 \Rightarrow$$

$$-y = 3 - 3x$$

$$2y = 8 - x \Rightarrow$$

$$y = -3 + 3x$$

$$y = \frac{8 - x}{2}$$



x	y
-2	-9
-1	-6
0	-3
1	0
2	3

x	y
-2	5
-1	9/2
0	4
1	7/2
2	3